

Canadian Pony Club



C2

STUDY

GUIDE

NAME _____

BRANCH _____



April 1997

CANADIAN PONY CLUB



C2 STUDY GUIDE

Reference Books:

NZ2	New Zealand Manual 2	S	Saddlery
KYH	Know Your Horse	L	USPC Guide to Lungeing
USPC "C"	USPC C Manual	B	USPC Bandaging
MHP	Maximum Hoof Power	HC	The Handbook of Horse Care
VN	Veterinary Notes for Horse Owners		
MH	Manual of Horsemanship, 10th Edition		
US AB	USPC AB Manual		

1. Feeding and Watering
2. Conditioning
3. Saddlery
4. Bandages and Rugs, Prep to Travel
5. Foot and Shoeing
6. Teeth
7. Conformation and Unsoundness
8. Lungeing
9. Grooming
10. Vet and First Aid

Lesson 1 Feeding & Watering

Topic Outline

1. Recognise a wide variety of grains and mixed feeds.
2. Recognise basic types of hays. ie. brome, alfalfa, timothy, grass hay, clover
3. Begin to understand the nutrient content of various grains and hays.
4. Begin to study the digestive system.
5. Six basic nutrients - uses and sources
6. Review properties of good hay.
7. Review factors contributing to the quality of hay.
8. Feeding weight vs volume

References

MH - pg. 143 - 169

- rules of good feeding, pg. 144-148
- roughage, pg. 155-157
- concentrates, pg. 148-152
- succulent foods, pg. 152-154
- feed scales, pg. 157-162
- feeding the sick horse, pg. 331-332
- watering, pg. 139-143
- nutrients, pg. 165-169
- feeding arrangements, pg. 162-164

USPC "C" - Chapter 5, pg. 185-203

- digestive system, pg. 185-187
- nutrients, pg. 188-195
- types of hays and grains, pg. 195-199
- weighing and measuring, pg. 199-201
- feeding the sick horse, pg. 202
- watering, pg. 188-189, 199

Handbook of Horse Care

- digestive system, pg. 88-89
- nutrients, pg. 91-98
- concentrates, pg. 105-108
- roughage, pg. 111

Know Your Horse

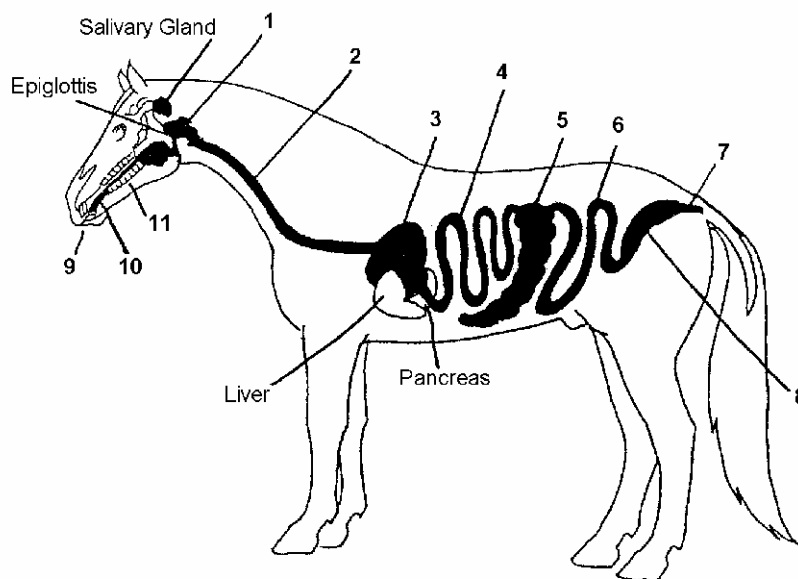
- rules of good feeding, pg. 175-177
- digestion with nutrients, pg. 14-18
- vitamins and minerals, pg. 19-24

USPC AB Manual

- Chapter 11 page 303-329

Lesson 1 Feeding and Watering Assignment

1. Give two reasons for feeding plenty of bulk in the daily diet.
(NZ1 pg. 129; MH pg. 147; USPC "C" pg. 195)
2. List 3 uses of water in the horse's body.
(KYH pg. 17; USPC "C" pg. 188)
3. List 4 properties of good hay. (MH pg. 155; USPC "C" pg. 196)
4. List 3 factors, other than size, weight, age and temperament, that determine the amount of feed fed to a particular horse.
(MH pg. 145-146; USPC "C" pg. 201)
5. List 3 rules of good feeding and give reasons for each.
(MH pg. 144-148)
6. List 3 uses of protein in the horse's body.
(USPC C pg.191, MH p.166)
7. Explain why it is important to feed by weight rather than by volume.
8. List 3 basic principles involved in feeding a sick horse.
9. Name the six basic nutrients required by horses.
(MH p.165, USPC C p.188)
10. Can you name these parts of the digestive system?



Lesson 2 Conditioning

Topic Outline

1. Developing a conditioning program.
2. How feeding relates to conditioning.
3. Recognising a fit horse.
4. Relate feeding to level of activity.
5. Understand the difference between exercise and work.
6. Causes of poor condition.
7. Care of the horse before, during and after competition.

References

MH - pg. 168-172, 301-304

- fatness vs. fitness, pg. 226
- conditioning plan, pg. 227-228
- roughing off, pg. 229
- defining conditioning, pg. 219-221
- causes of poor condition, pg. 221-224

USPC "C" - Chapter 7, pg. 233-249

- galloping, pg. 87
- conditioning ration, pg. 202

USPC AB -page 289-300

NZ2 - pg. 88-92

- defining conditioning, pg. 88-89
- conditioning plan, pg. 89
- work vs. exercise, pg. 90-91
- signs of fitness, pg. 91
- roughing off, pg. 92

Lesson 2 Conditioning Assignment

1. List 3 signs that your horse is becoming fit.
(NZ2 pg. 91)
2. Explain the difference between 'work' and 'exercise'.
(NZ2 pg. 90-91)
3. What are 2 signs that you are giving your horse too much work?
(NZ2 pg. 91)
4. What feeding changes should you make when taking a horse from soft to hard condition?
(USPC "C" pg. 202)
5. Name 3 things that you would consider before beginning your conditioning plan.
(MH pg. 227)

Lesson 3 Saddlery

Topic Outline

1. Identify a wide variety of snaffle bits.
2. Understand the action of a snaffle bit and common evasions.
3. Begin to become familiar with other types of bits.
4. Review fitting a saddle.
5. Review the identification, purpose and fitting of various pieces of equipment.

References

MH - pg. 257-302

- saddle structure, pg. 259-263
- types of saddles, pg. 263-264
- fitting a saddle, pg. 266-268
- girths, pg. 271-274
- snaffle bridles, pg. 280-281
- types of reins, pg. 282
- double bridles, pg. 282-284
- action of the bit, pg. 287
- snaffle bits, pg. 289-291
- types of bits, pg. 291-294
- resistance to the bit, pg. 294-296
- nosebands, pg. 296-298
- martingales, pg. 298-300
- care of saddlery, pg. 314-324

USPC "C"

- safety and tack inspection, pg. 303-306

NZ2 - pg. 262-283

- action of the bit, pg. 262-263
- nosebands, pg. 269-271
- martingales, pg. 271-272
- bit evasions, pg. 273-277
- saddle structure, pg. 277-280
- types of saddles, pg. 280-281

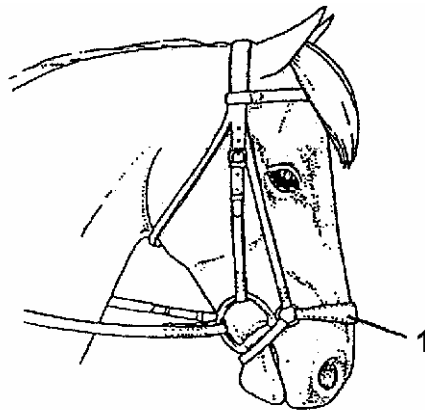
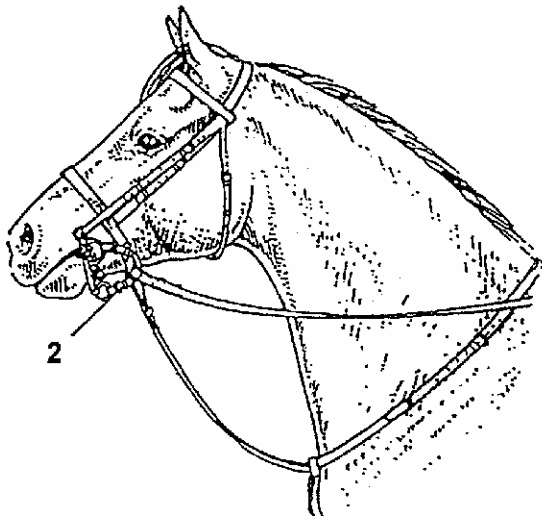
Saddlery

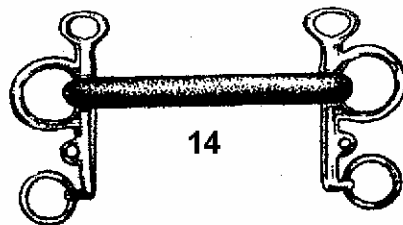
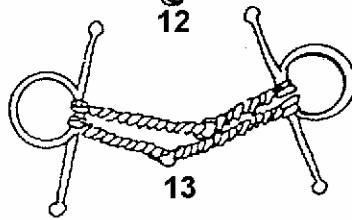
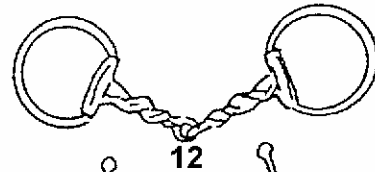
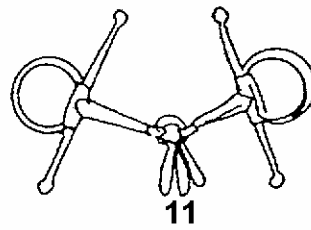
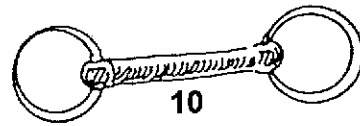
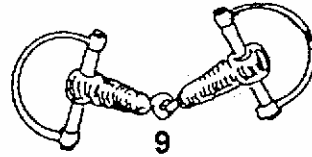
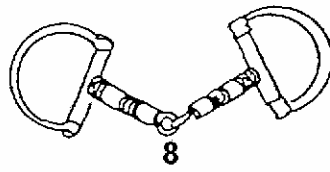
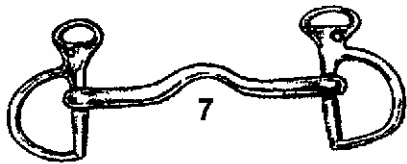
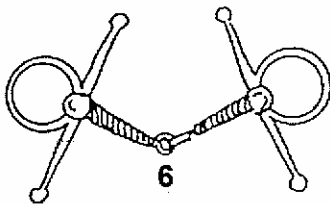
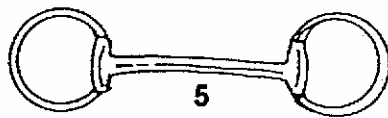
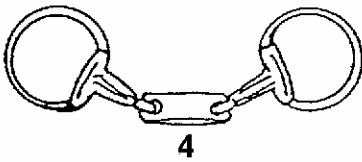
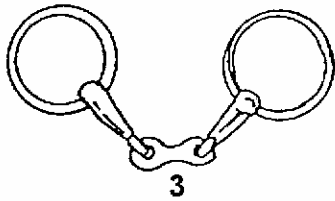
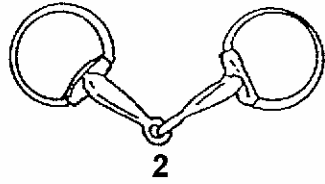
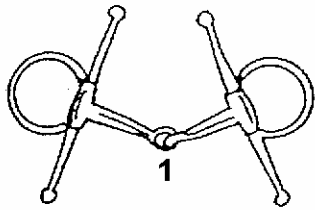
- families of bridles, pg. 14
- parts of bridles, pg. 14-15
- action of the bit, pg. 31
- the snaffle, pg. 32-33
- double bridle, pg. 33-35; 73-77
- the pelham, pg. 36-37; 78-84
- the gag snaffle, pg. 37-38; 85-87
- bitless bridle, pg. 38-39; 88-90
- nosebands, pg. 46-51
- martingales, pg. 52-58
- types of snaffles, pg. 61-72
- curb chains, pg. 91-93
- structure of saddle, pg. 113-131
- saddle fitting, pg. 132-155
- types of saddles, pg. 165-178
- girths, pg. 179-183
- breastplates, pg. 183-184
- stirrups, pg. 185-191

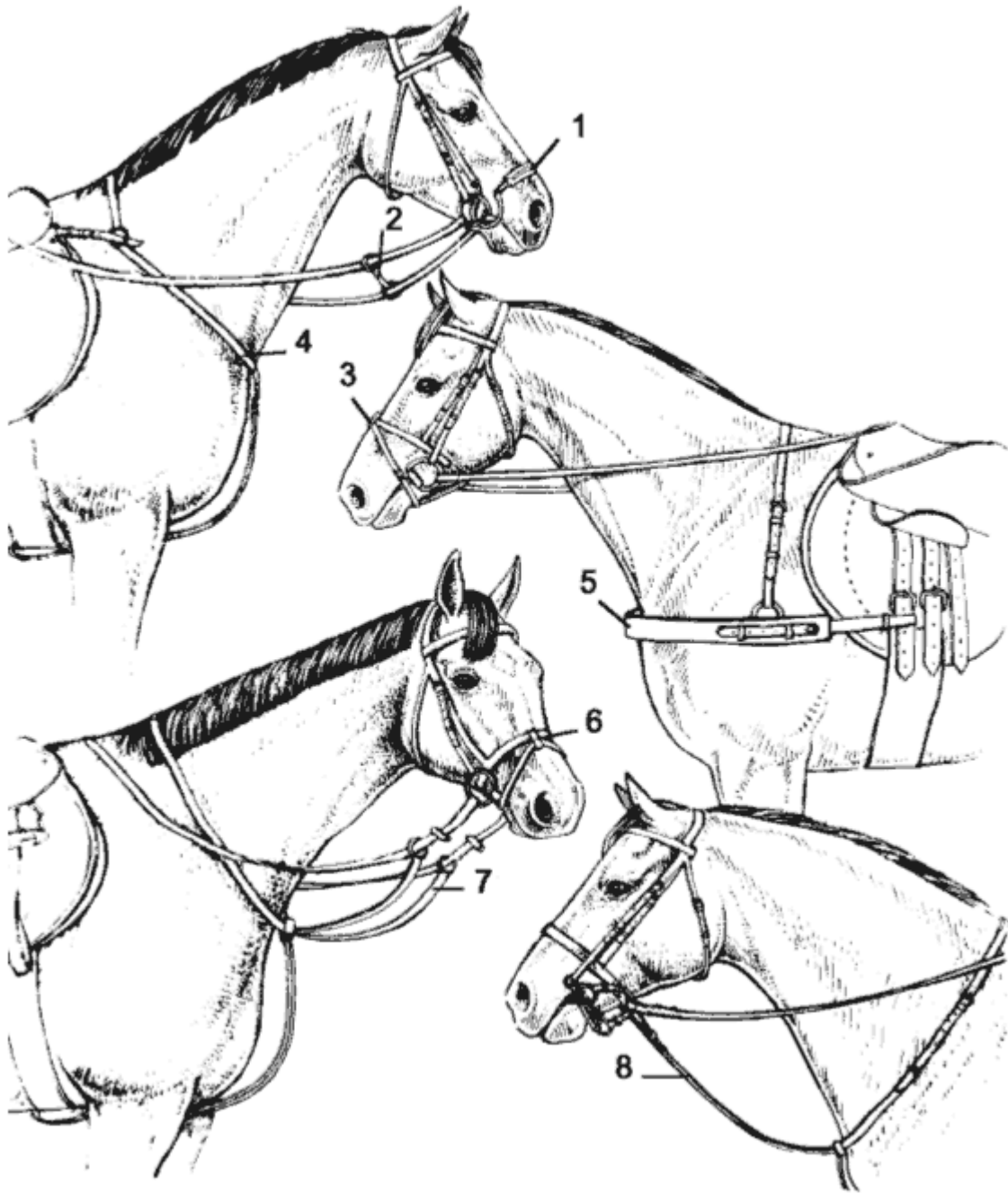
- USPC AB Manual** -page 423-439
- page 442-452

Lesson 3 Saddlery Assignment

1. List 3 reasons why a horse may resist the bit.
(NZ2 pg. 273; MH pg. 294)
2. Name 3 types of nosebands and 3 types of girths.
(MH pg. 271-274 & pg. 296-298; S pg. 46-51 & 179-183)
3. Name 3 areas of the mouth acted upon by the snaffle bit.
(NZ2 pg. 262; MH pg. 289; S pg. 31)
4. What is the purpose of a standing martingale?
(S pg. 52; MH pg. 298)
5. List 2 considerations when fitting a dropped noseband.
(S pg. 47; MH pg. 297)
6. Identify the following pieces of tack.







Lesson 4 Bandages & Rugs and Travel

Topic Outline

1. Practice applying stable, shipping and tail bandages.
2. Identify different types of boots and bandages, & understand the purposes of each.
3. Practice applying different types of rugs and blankets.
4. Identify different types of rugs and the purposes of each.
5. Trailer safety, how to load a difficult horse.

References

MH - pg. 169-181

- types of rugs and blankets, pg. 169-172
- putting on and taking off a rug, pg. 173-175
- bandages, pg. 176-179
- tail bandages, pg. 179-181

USPC "C" - Chapter 9, pg. 261-274

- shipping bandages, pg. 266-270
- stable bandages, pg. 270-272
- blankets, pg. 162-164

Saddlery

- bandages, pg. 199-201
- rollers & surcingles, pg. 203
- rugs and blankets, pg. 205-212

NZ2

- bandages, pg. 284-287
- rugs and blankets, pg. 290-291

USPC Bandaging Booklet

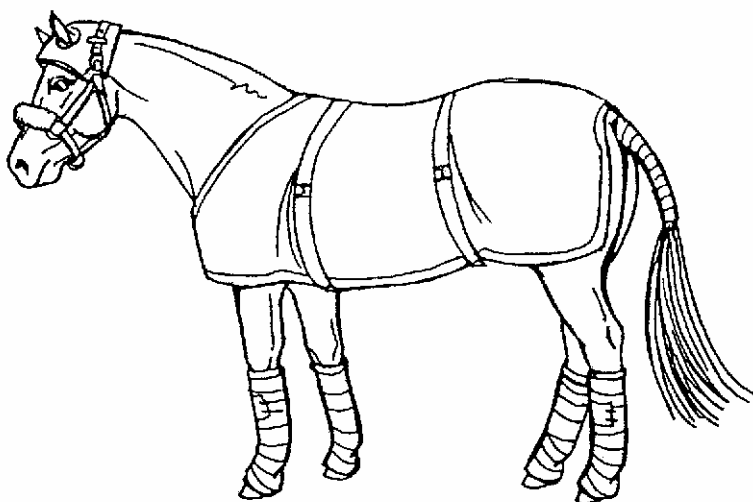
- bandage materials, pg. 2-4
- padding materials, pg. 4-6
- shipping bandage, pg. 9-10
- stable bandage, pg. 10-11
- tail bandage, pg. 23-25
- do's & don'ts and helpful hints, pg. 28-29

US AB Manual

- travel page 411-422
- bandages page 391-410
- boots page 440-442

Lesson 4 Bandages & Rugs and Travel Assignment

1. Name 2 different types of rugs or blankets and give a purpose for each one.
2. Give 2 purposes for a tail bandage.
3. Why should you never put a tail bandage on wet?
4. Name 3 qualities of a well applied shipping bandage.
5. Name 5 pieces of equipment to use on your horse when travelling.
6. Give 2 methods of encouraging a reluctant horse to load.
7. List 5 things which should be checked regularly on your horse trailer.



Lesson 5 Foot & Shoeing

Topic Outline

1. Structure of the foot - inside and outside.
2. Understand the purposes of the various structures.
3. Identify all the shoeing tools and understand the uses of each one.
4. Know the names of different parts of the shoe.
5. Be able to identify and understand the purpose of several basic types of shoes.
6. Recognise a good shoeing job.
7. Understand the use of 'studs', how to apply and when they should be used.

References

KYH - pg. 162-166

MH - pg. 207-217

- structure of the foot, pg. 208-209
- when to re-shoe, pg. 210
- farrier's tools, pg. 211
- systems of shoeing, pg. 210-213
- signs of good shoeing, pg. 213
- types of shoes, pg. 214-215
- studs, pg. 215-217
- care of the unshod foot, pg. 217

NZ2 - pg. 103-107; 212-216

- clips, pg. 103-104
- hot vs. cold shoeing, pg. 104
- farrier tools, pg. 105
- stages in shoeing, pg. 105-107
- structure of the foot, pg. 212-214
- types of shoes, pg. 214
- studs (corks), pg. 215-216

USPC "C" - Chapter 8, pg. 251-259

- reasons to shoe, pg. 251
- farrier tools, pg. 253-254
- good /bad shoeing, pg. 255-257
- types of shoes, pg. 258-259

Maximum Hoof Power

- hoof structure, pg. 10-14
- types of shoeing & trimming, pg. 15
- advantages of barefoot, pg. 17-18
- advantages of shoeing, pg. 18-19
- purposes of shoeing, pg. 22-23
- shoeing process, pg. 27-40 (pictorial)
- preparation of the hoof, pg. 42-49
 - shoe preparation, pg. 49-53
 - nails, pg. 54-56; 77
 - types of shoes, pg. 58-71
 - shoe terms, pg. 61
 - types of pads, pg. 71-75
 - clips, pg. 75-77
 - phases of a stride, pg. 84
 - terms of movement, pg. 87-88
 - movement defects, pg. 111-124
 - shoeing for your discipline, pg. 125-159
 - foot problems, pg. 160-189
 - training a horse for shoeing, pg. 193-204
 - lost shoes, pg. 226-231

US AB Manual - page 254-256

- page 274-288

Lesson 5 Foot & Shoeing Assignment

1. List 4 shoeing tools and give a use for each one.
 (MH pg. 211-212; USPC "C" pg. 253-254)

2. List 4 indicators that it is time to reshoe.
 (MH pg. 210; USPC "D" pg. 206)

3. List 6 things to look for in a newly shod foot.
 (MH pg. 213; USPC "C" PG.256)

4. List the 3 bones found completely or partially in the foot.
 (MH pg. 352)

5. Give one advantage of hot shoeing and one advantage of cold shoeing.
 (MH pg. 210-211; USPC "C" pg. 254)

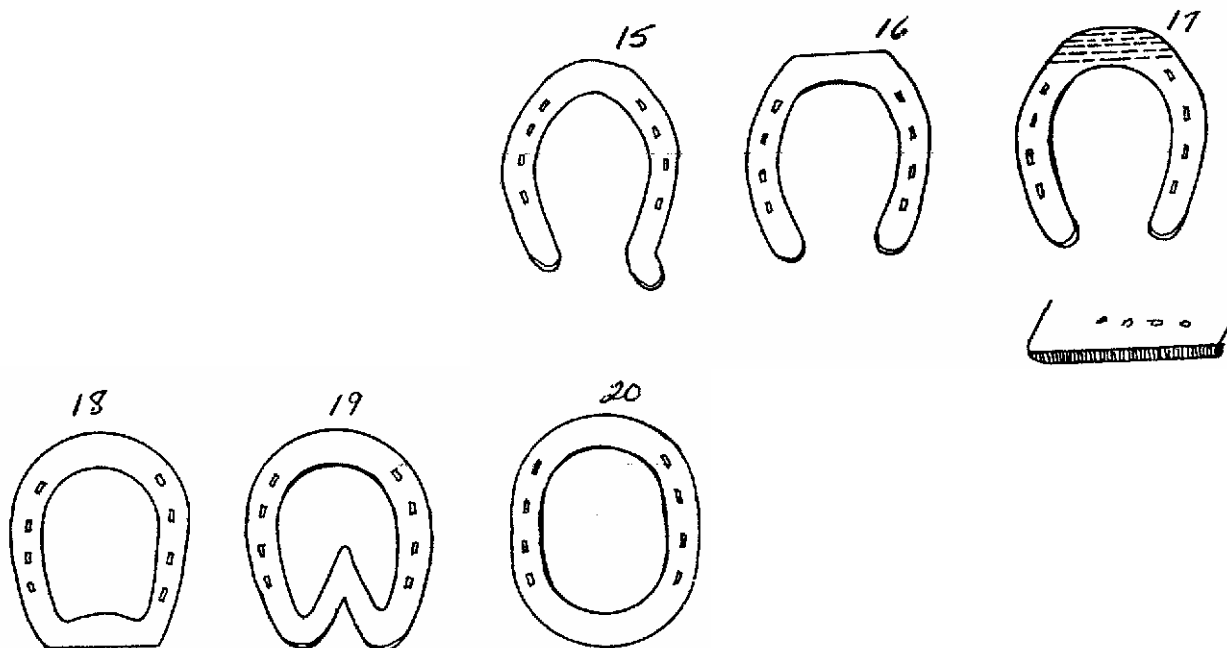
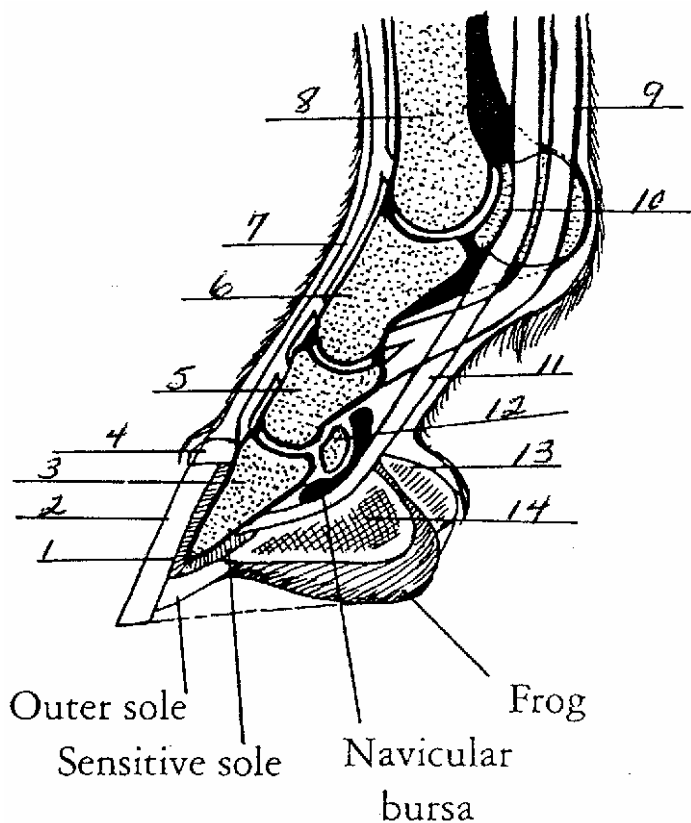
6. Draw a diagram of a shoe and name the 7 parts.
 (MHP pg. 59)

7. Give 2 general purposes of a bar shoe.
 (MHP pg. 59-60)

8. Draw a diagram of an egg bar shoe give 2 reasons to use one.
 (MHP pg. 62)

9. Name two variations to the toe that can decrease the force needed for breakover.
 (MHP pg. 70)

Give the proper names for each numbered part of the diagrams.



Lesson 6 Teeth & Ageing

Topic Outline

1. Two sets of teeth -names
-identifying features of each
2. Types of teeth -molars, incisors, wolf, canine
-numbers and purposes
3. Incisors -name of each set
-age of appearance
4. Galvayne's Groove -definition and location
-use in ageing
5. Floating -definition, teeth involved, reasons

References

MH - pg. 222-223; 385-387

- wolf teeth, pg. 222
- anatomy of the mouth, pg. 223
- ageing by the teeth, pg. 385-387

USPC "C" - pg. 211-215

- anatomy of the mouth, pg. 212-213

NZ2 - pg. 249-251

- age the teeth come in

KYH - Chapter 5, pg. 50-56

- types of teeth, pg. 50
- ageing, pg. 51-56

VN - Chapter 53, pg. 686-698

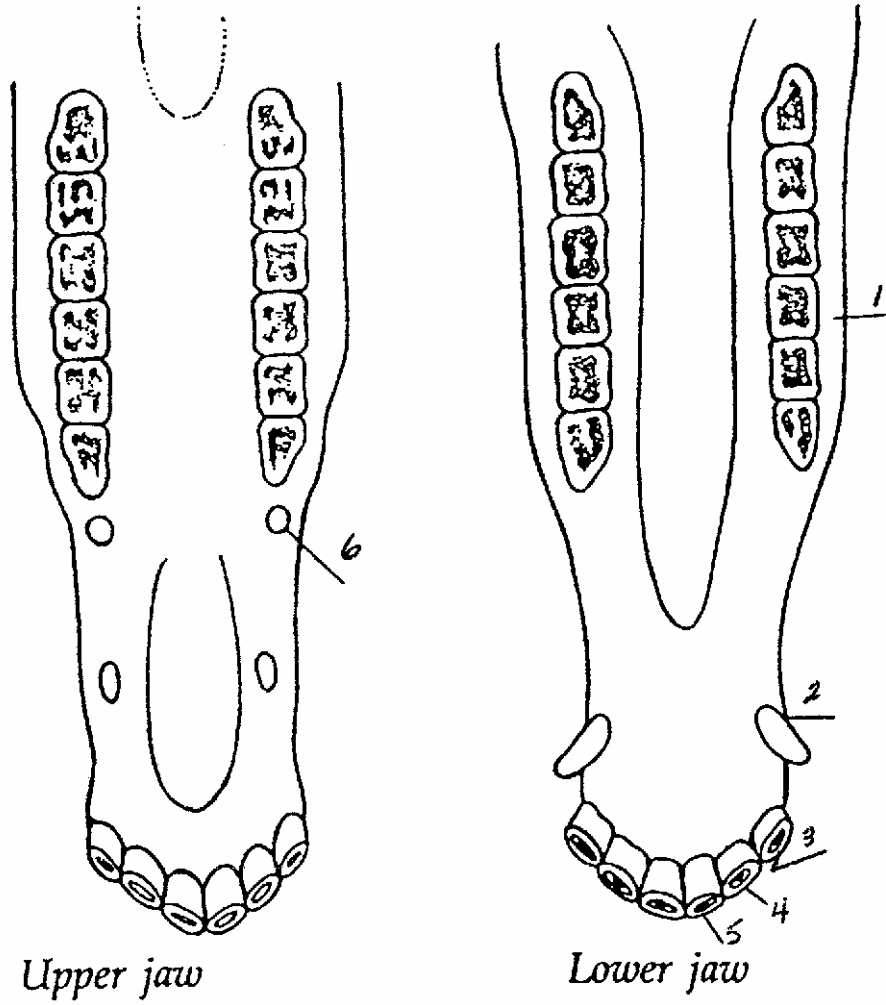
- parts of a tooth, pg. 687
- incisors, pg. 689-690
- molars, pg. 690
- wolf teeth, pg. 690
- ageing, pg. 691-696

US AB Manual page 330-339

Lesson 6 Teeth and Ageing Assignment

1. Name the two sets of teeth that a horse will get in its lifetime.
2. Give two differences in appearance between these two sets.
3. Which teeth are used for grinding? What is another name for these teeth?
4. Which teeth are used for biting?
5. How many molars are found in a mature horse?
6. How many incisors are found in an adult horse?
7. List 2 facts about tushes.
8. List 4 facts about wolf teeth.
9. List the progression of Galvayne's Groove from the time it appears until it disappears.
10. Describe floating, including reasons and which teeth are involved.
11. At what age does a horse have a full mouth?
12. At what age do the following permanent incisors appear:
 - centrals
 - laterals
 - corners
13. At what age does a hook first appear and which teeth are involved?

Give the correct name for the numbered parts of the diagram.



Lesson 7 Conformation & Unsoundness

Topic Outline

1. Be able to name and locate a wide variety of unsoundnesses.
2. Be able to give a possible cause for each unsoundness.
3. Begin to relate unsoundnesses to conformation faults.
4. Begin to study the underlying structures of the legs.
5. Be able to give a basic outline of a given horse's conformation.
6. Point out good and bad points of conformation.

References

MH - pg. 391-402

- general impression, pg. 392-401
- conformation faults, pg. 396
- foreleg conformation, 395, 397
- hind leg conformation, 400-401
- unsoundnesses, pg. 358-364
- sprains, pg. 358-360
- bursal enlargements, 360-362
- bony enlargements, pg. 363-364

USPC "C" - Chapter 12

- conformation, pg. 313-324
- foreleg conformation, pg.316-319
- hind leg conformation, 319-323
- lower leg conf. faults, pg.323-324
- unsoundnesses, pg. 324-331
- movement problems, 332-334

KYH - Chapter 3, pg. 30-39

- body conformation, pg. 30-32
- foreleg conformation, pg. 33-37
- hind leg conformation, pg. 38-39
- unsoundnesses, pg. 124-159
- foreleg unsoundness, pg.130-141
- hind leg unsoundness,pg146-150
- sprains, pg. 150-159

NZ2 - conformation, pg. 131-140

- bursal enlargements, 241-242
- bony enlargements, pg. 242-244
- sprains, pg. 244-245

VN - sites of lameness, pg. 144

- soundness/conformation, 602-617
- head, neck, back conf. pg. 603-609
- foreleg conformation, pg. 609-612
- hind leg conformation, pg. 613-615

US AB Manual Chapter 8 pg. 251-273

Lesson 7 Conformation & Unsoundness Assignment

1. Name 3 unsoundnesses found in the hock area.
(KYH pg. 124; MH back cover)

2. What is the name given to an ossification of the lateral cartilages of the foot?
(NZ2 pg. 243)

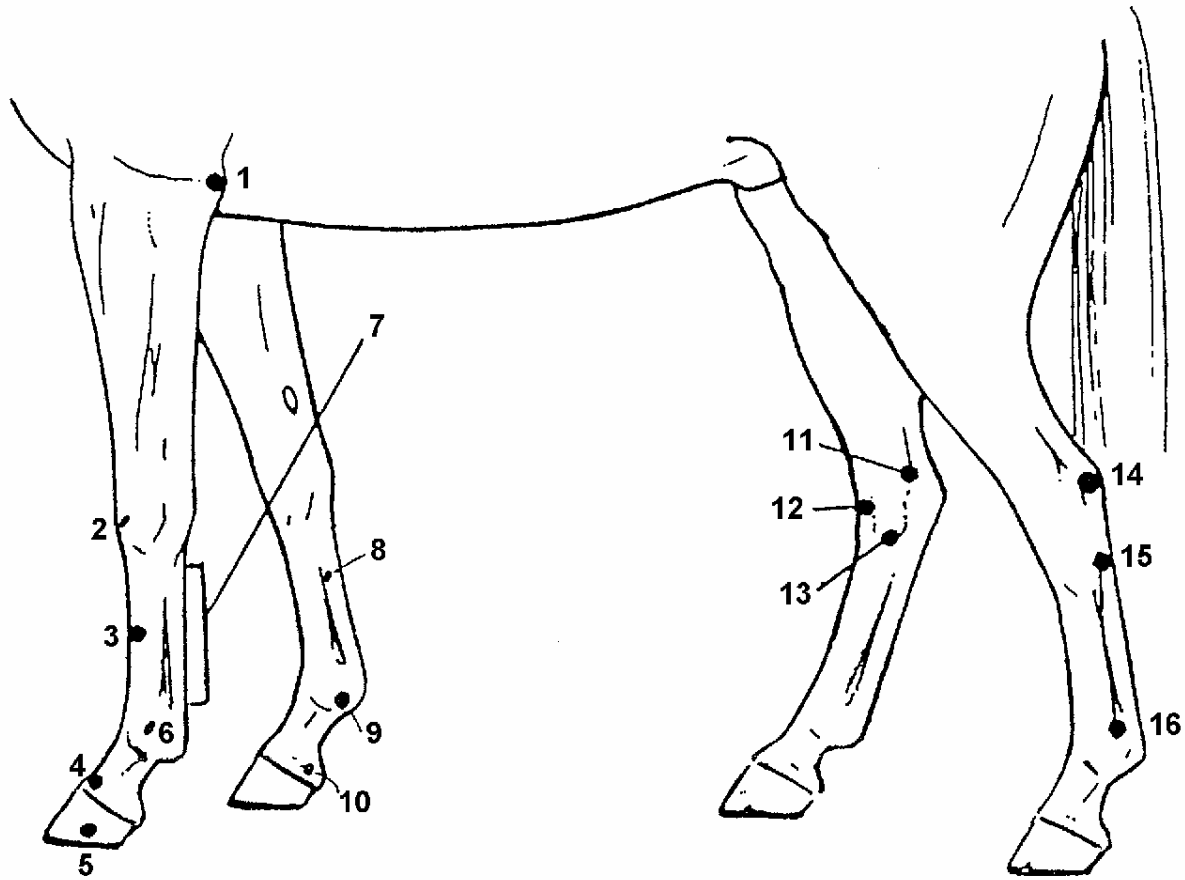
3. Name the conformation fault.
 - a) small, deeply set eyes MH pg. 392
 - b) convex nose MH pg. 394
 - c) a short, thick neck MH pg. 395
 - d) toes turning inward MH pg. 393

4. Give 2 conformation faults found in the front leg.
(NZ2 pg. 134-135; MH pg. 397)

5. Name the bursal enlargement which is a swelling of the extensor tendon sheath where it passes over the knee. (MH pg. 362)

6. Relate each unsoundness to a possible conformation fault:
 - a) ringbone (USPC C pg.328)
 - b) bog spavin (USPC C pg.331)
 - c) thoroughpin (USPC C pg.331)
 - d) splints (USPC C pg.325)

7. Name the unsoundnesses.



Lesson 8 Lungeing

Topic Outline

1. Begin to recognise the different pieces of lungeing equipment.
2. Begin to learn how to fit and use the various pieces of equipment.
3. Begin to understand the reasons for lungeing.
4. Begin to practice basic techniques of lungeing for exercise.

Note: Lungeing is not tested at the C2 level. However, it is important to begin studying the theory and practising under supervision in preparation for your B test.

References

MH - lungeing, pg. 230-231
- lungeing equipment, pg. 302

US AB Manual - Chapter 5
- page 149-183

NZ 2

- reasons to lunge, pg. 254
- lungeing equipment, pg. 255-256
- method of lungeing, pg. 256-260

USPC "C" - Chapter 10 pg. 275-299

- reasons to lunge, pg. 279-280
- lungeing equipment, pg. 281-286
- safety while lungeing, pg. 287
- methods of communication, pg. 287-295
- method of lungeing, pg. 296-299

USPC Guide to Lungeing -

- reasons to lunge, pg. v
- fitting equipment, pg. 1-6
- use of the voice, pg. 7-8
- use of the whip, pg. 8-9
- use of the lunge line, pg. 9
- use of the body, pg. 9
- C Level lungeing, pg. 13-16

Saddlery

- lungeing equipment, pg. 227-229; 231-233

Lesson 8 Lungeing Assignment

1. List 3 situations when you might lunge for exercise.
(MH pg. 231; L pg. v)
2. Give 3 features of a safe lungeing area.
(L pg. 6)
3. Name 5 pieces of equipment worn by the horse and/or handler when safely lungeing a horse.
(USPC "C" pg. 281-286; L pg. 1-6)

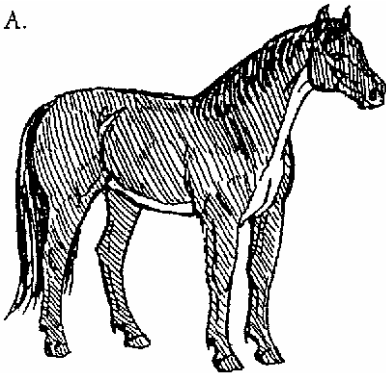
Lesson 9 Grooming

Grooming is not covered on the practical portion of the C2 Test. However, there may be Grooming questions on the written paper. Review the Grooming section from the C1 Study Guide and for more information see the B/B2 Study Guide.

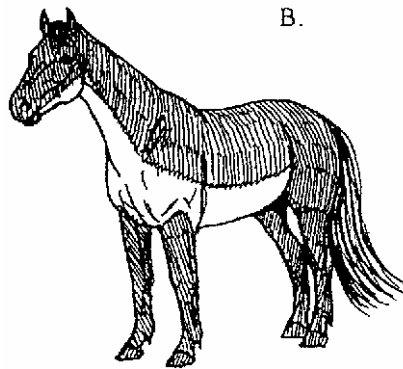
Sample Written Questions

1. List 3 reasons to clip a horse.
2. Name and describe 4 types of clips.
3. Give 2 reasons to pull a mane.
4. Explain how to 'bang' a tail.
5. Identify these clips.

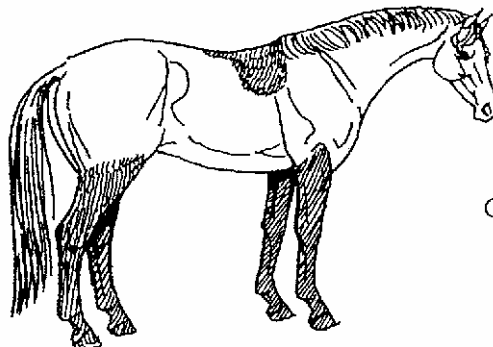
A.



B.



C.



Lesson 10 Vet & First Aid

Vet & First Aid is now (as of 2002) covered on the practical portion of the C2 Test. However, there may be questions on the written paper. Review the Vet & First Aid section from the C1 Study Guide and for more information see the B/B2 Study Guide.

US AB Manual p 340-349, 350-353, 353-362

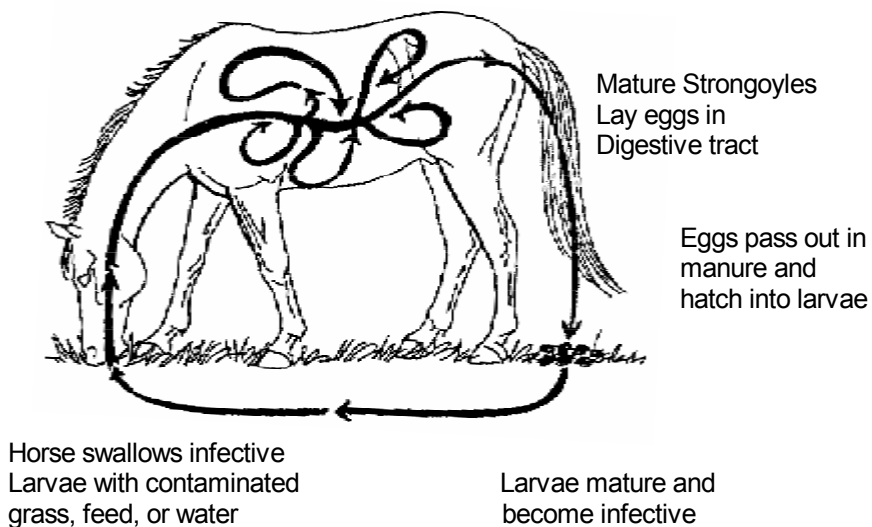
Sample Written Questions

1. List 3 diseases against which your horse should be vaccinated regularly.
2. Give 2 causes, 2 symptoms and 2 possible treatments for laminitis.
3. What is the most serious type of wound? Why?
4. List 1 external and 4 internal parasites that affect horses.
5. List 2 causes, 2 symptoms and 2 treatments for colic.
6. List 3 uses of a poultice.

Start to study the life cycles of the major parasites. Use these diagrams to get you started, then check the reference materials for more information.

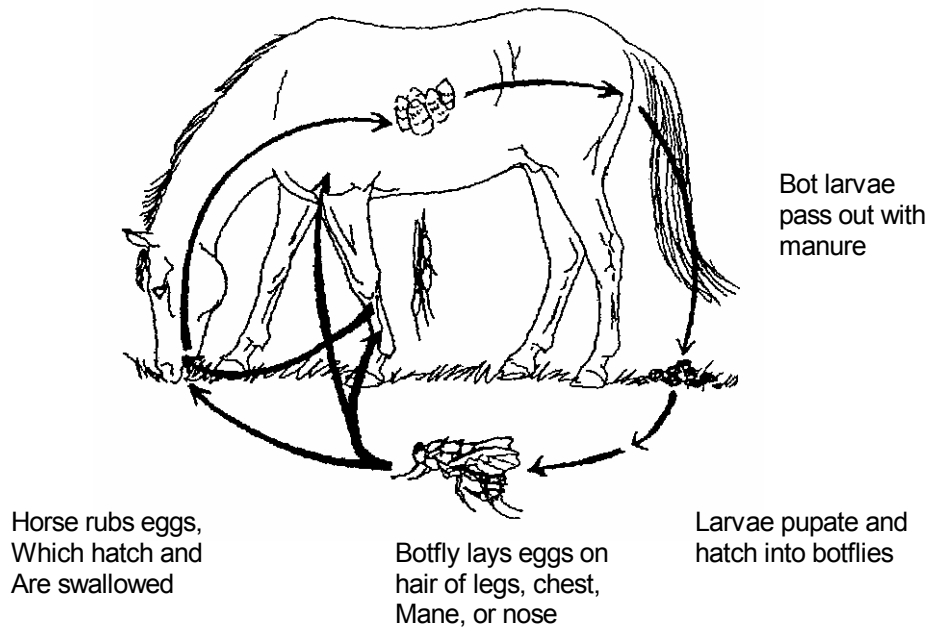
LIFE CYCLE OF LARGE STRONGOYLES

Larvae migrate through blood vessels and organs



LIFE CYCLE OF BOTFLY

Larvae (bots) remain in stomach 8-10 months



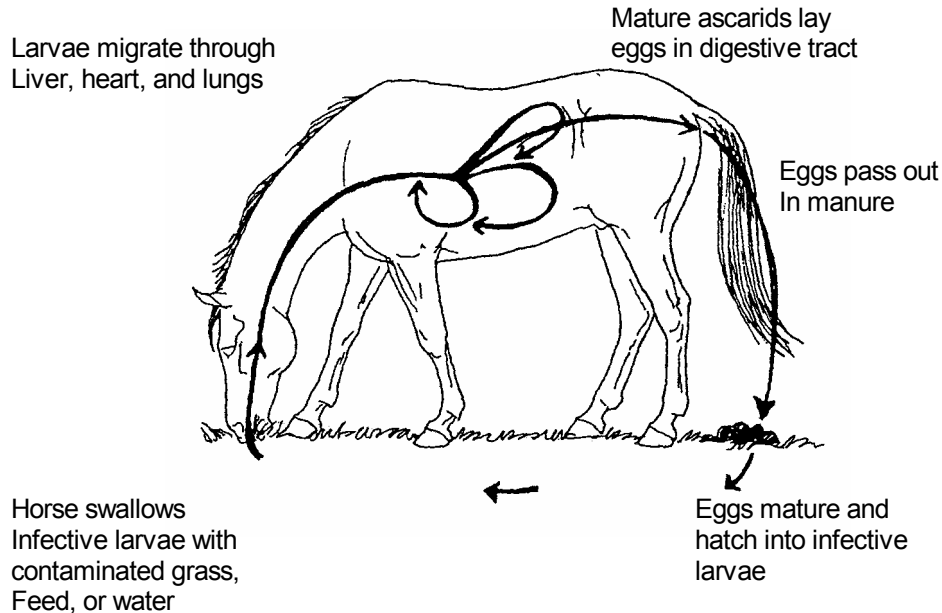
Horse rubs eggs,
Which hatch and
Are swallowed

Botfly lays eggs on
hair of legs, chest,
Mane, or nose

Larvae pupate and
hatch into botflies

Bot larvae
pass out with
manure

LIFE CYCLE OF ASCARID



Larvae migrate through
Liver, heart, and lungs

Mature ascarids lay
eggs in digestive tract

Eggs pass out
In manure

Eggs mature and
hatch into infective
larvae

Horse swallows
Infective larvae with
contaminated grass,
Feed, or water